

FREDERICK DOUGLASS PARK ON THE TUCKAHOE

ADVISORY COMMITTEE MEETING

2025/06/12



ACKNOWLEDGEMENTS

Pete Leshner | Talbot County Council

Kenneth B. Morris, Jr. | Frederick Douglass Family Initiatives

Corey W. Pack

Marci Ross | Maryland Dept. of Commerce – Tourism Development

Richard Marks

Harriette Lowery | Frederick Douglass Honor Society

Nate Hoxter | Town of Queen Anne Maryland

Dale G. Green | SCB & G | A Green Company, Inc.

Clay Stamp | County Manager

Cassandra M. Vanhooser | Economic Development and Tourism

LaDarian Blake | Talbot County Parks and Recreation


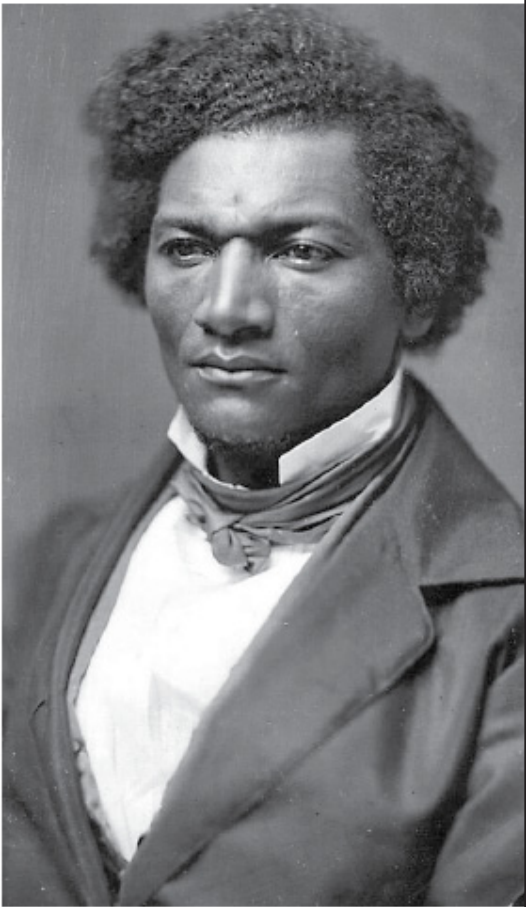

AGENDA

- 1. Park Master Plan
- 2. Phase 2
- 3. Timeline
- 4. Final Site Plan
- 5. Visualizations

Frederick Douglass Park on the Tuckahoe

Master Park Development Plan


Talbot County
13211 Lewistown Road
Queen Anne, MD 21657



Master Park Development Plan


September 2021

Talbot County Department of Parks and Recreation
10028 Ocean Gateway, Easton, MD 21601



Frederick Douglass Park on the Tuckahoe

Master Park Development Plan | Talbot County, Maryland



Appendix A

The Design Minds

designminds

DESIGN • CONTENT

Interpretive Plan

*The plan prescribes a bold vision for the park as a **fitting memorial** to Douglass and as a place to **interpret his early years** in Talbot County and their impact on his life and work.*

Inspiration on the Tuckahoe: Frederick Douglass' Journey from the Eastern Shore

Frederick Douglass was an agent of change and a Founding Father who fought for the rights and freedom of Black Americans. During Douglass' formative years, the people, experiences, and unique landscape of the interconnected Tuckahoe community in Talbot County helped to shape his worldviews and ignited his lifelong quest for justice.

- Frederick Douglass Park on the Tuckahoe Interpretive Plan

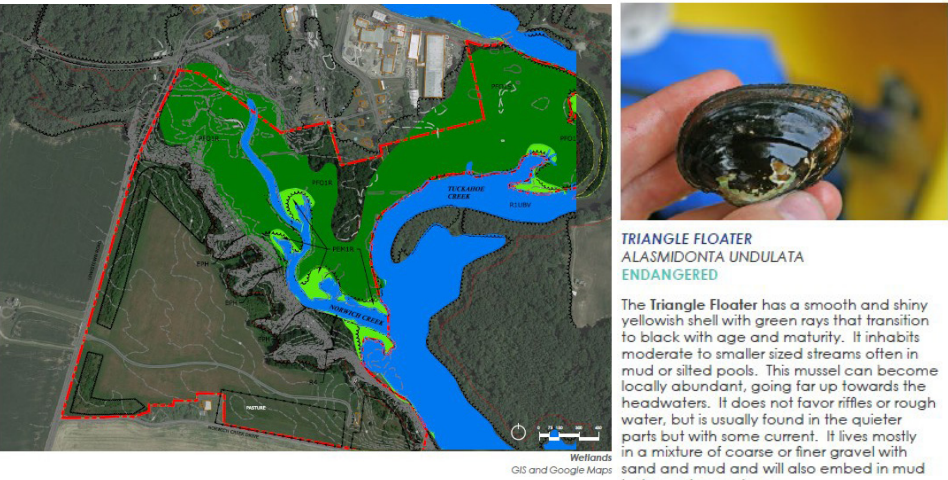
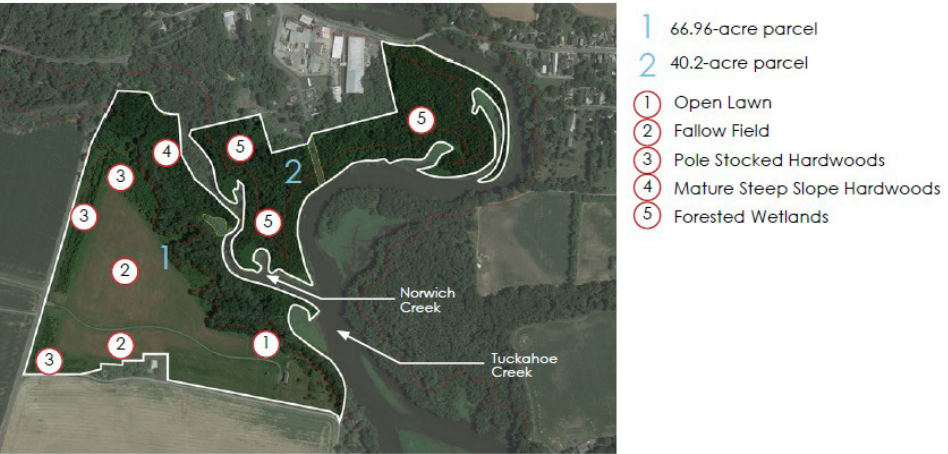


Frederick Douglass Park on the Tuckahoe

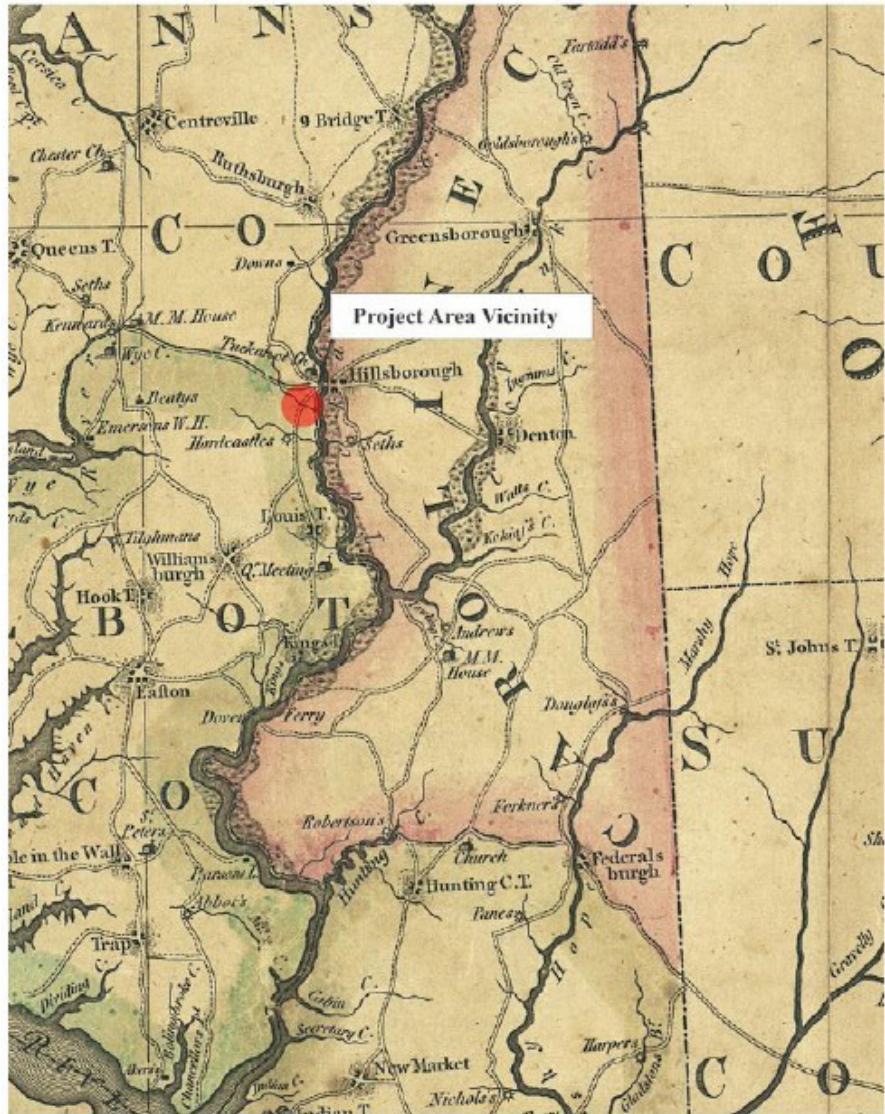
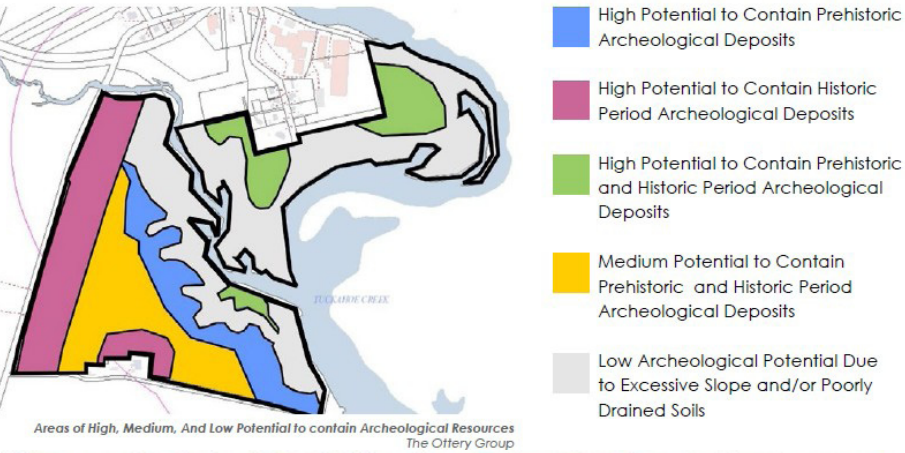
Natural Resources

Landscape Typologies

The park in total consists of 107.16-acres of undeveloped natural area and fallow agricultural fields. It is made up of two parcels. The larger 66.96-acre parcel of Frederick Douglass Park on the Tuckahoe consists of lawn, meadow, forested steep slopes and the Tuckahoe and Norwich Creek waterfront. An abutting 40.2-acre parcel, originally known as the George C. and Naomi H. Moore Nature Preserve is primarily forested wetlands, located on the fresh-tidal Tuckahoe Creek. The parcels share Norwich Creek, as an internal boundary.

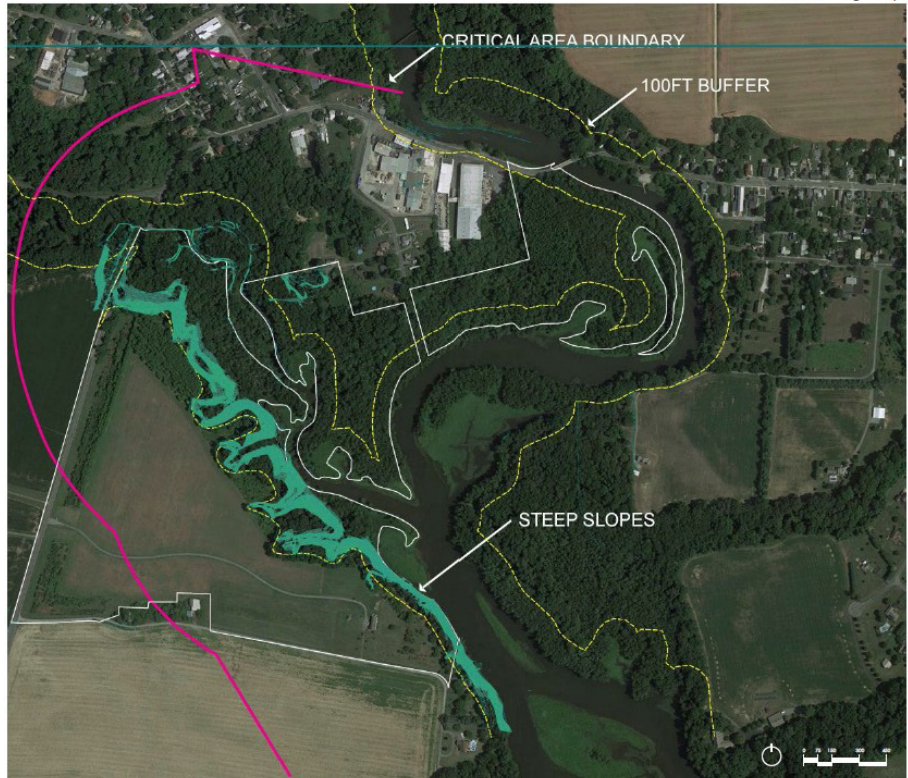
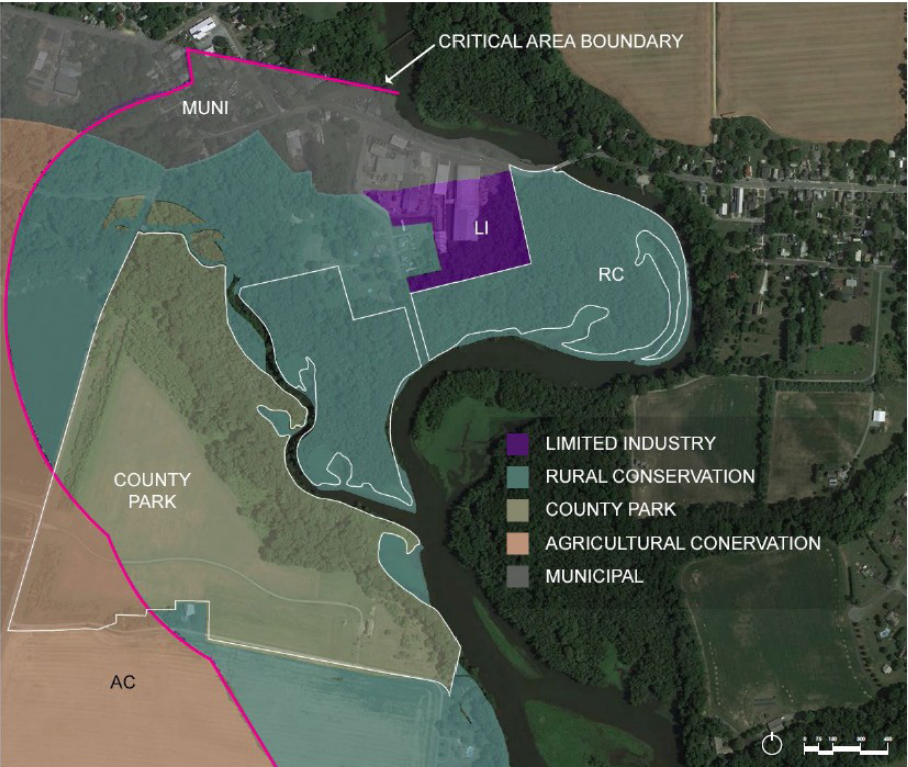


Cultural Resources



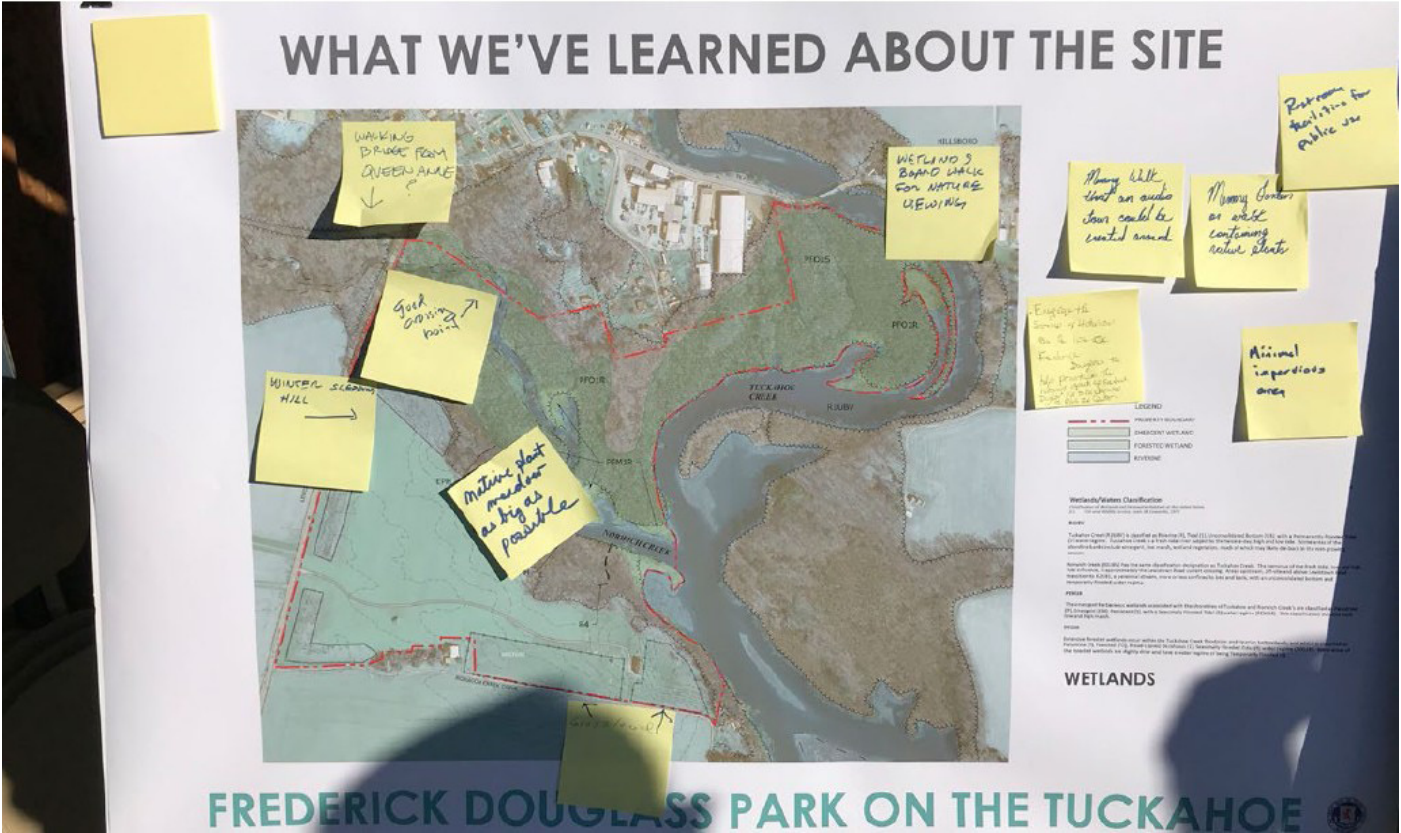
1795 Dennis Griffith Map of the State of Maryland with Project Area Vicinity Outlined

Regulatory Analysis



100 FT Buffer and Steep Slopes GIS and Google Maps

Frederick Douglass Park on the Tuckahoe



Frederick Douglass Park
on the Tuckahoe

COMMUNITY MEETING

SATURDAY, OCTOBER 24
11 A.M. - 1 P.M.
13213 Lewistown Road, Queen Anne, MD
or
join us on Zoom
Go to TalbotParks.org for link. Registration required.

Your input is essential to the success of this project!

In case of rain, meeting will be held at the
Talbot County Community Center.
For more information, call 410-770-8050.



Frederick Douglass Park on the Tuckahoe

Unveiling of the Interpretive Plan
The Design Minds



CONSERVATION SPACE

- Make broader part of park's natural areas more **accessible** to visitors
- Extend **trail networks**
- Negotiate **steep slopes** and protect large existing trees while providing an ADA-compliant boardwalk
- **Waterfront access** for kayak launch and arrival point

INTERPRETIVE SPACE

- Additional interpretive panels as described in the Interpretive Plan
- Facilities that can support **gathering and events** such as small plaza at parking access and restroom

MEMORIAL SPACE

- Outdoor gathering space, such as a **picnic shelter**, with accessible route from parking



CONSERVATION SPACE

- Completion of park **trail system and surrounding connections**
- Potential northern connection to the future rail-trail conversion of Chesapeake Railroad Right of Way
- Potential connection to Town of Queen Anne

INTERPRETIVE SPACE

- Park **visitor center**, memorial plaza and entry drive
- Adjacent walkways, stormwater facilities and expanded interpretive program

MEMORIAL SPACE

- The new visitor center should have an **outdoor space dedicated to memorialization** of Douglass



Frederick Douglass Park on the Tuckahoe

Queen Anne, MD



Site Infrastructure

S2.1 Group Picnic Shelter

S2.2 Create an Interim Visitor Center

S2.3 Trail Expansion

S2.4 Norwich Creek Bridge

Interpretive & Passive Recreational Program Elements

R2.1 Canoe and Kayak Launch

R2.2 Create Interpretive Elements for Use in Renovated Building

R2.3 Additional Interpretive Elements

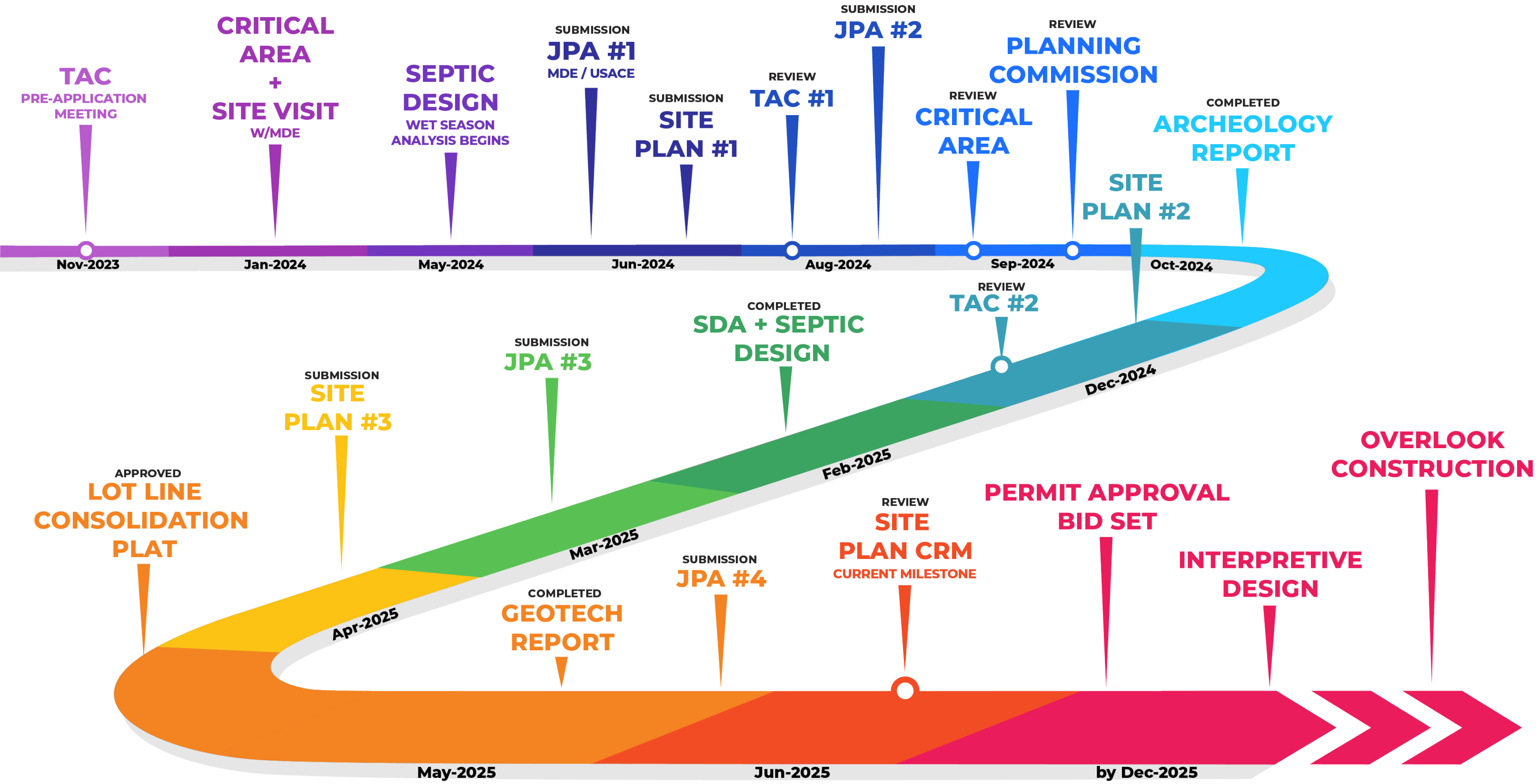
Process

P2.1 Complete Environmental Permitting for Phase 2 and 3 Development

P2.2 Design and engineering for Phase 2 bidding and construction.

P2.3 Begin preliminary design and engineering for the creation of the visitor center.

THE PARK'S JOURNEY: FROM WHERE WE'VE BEEN TO WHAT'S NEXT



Frederick Douglass Park on the Tuckahoe

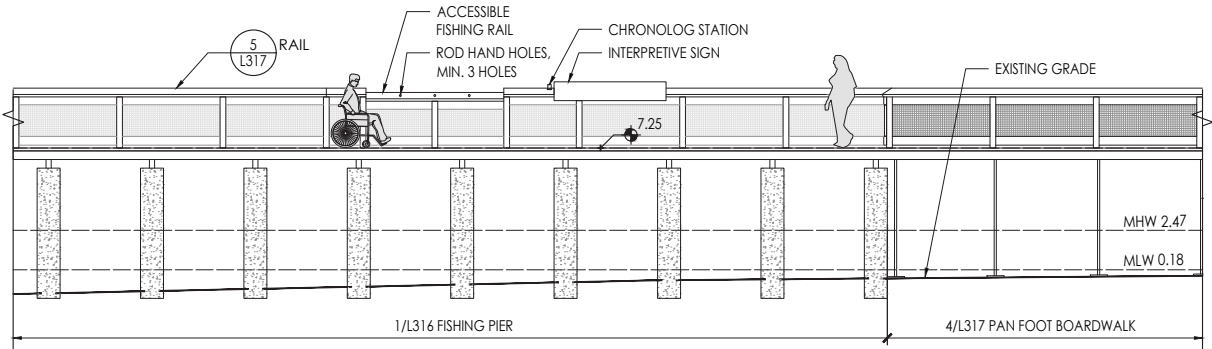
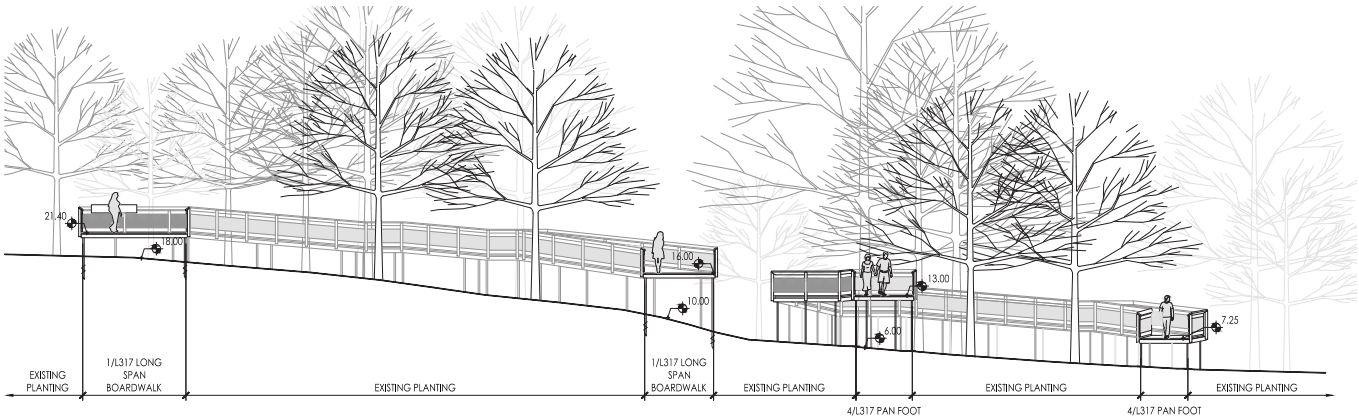
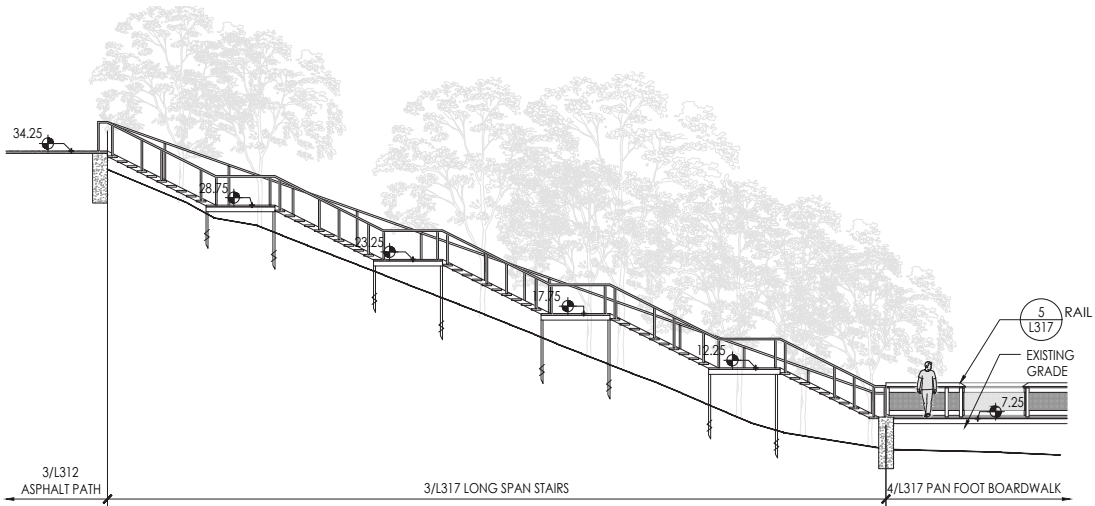


Frederick Douglass Park on the Tuckahoe

WATER ACCESS: SITE PLAN SUBMISSION

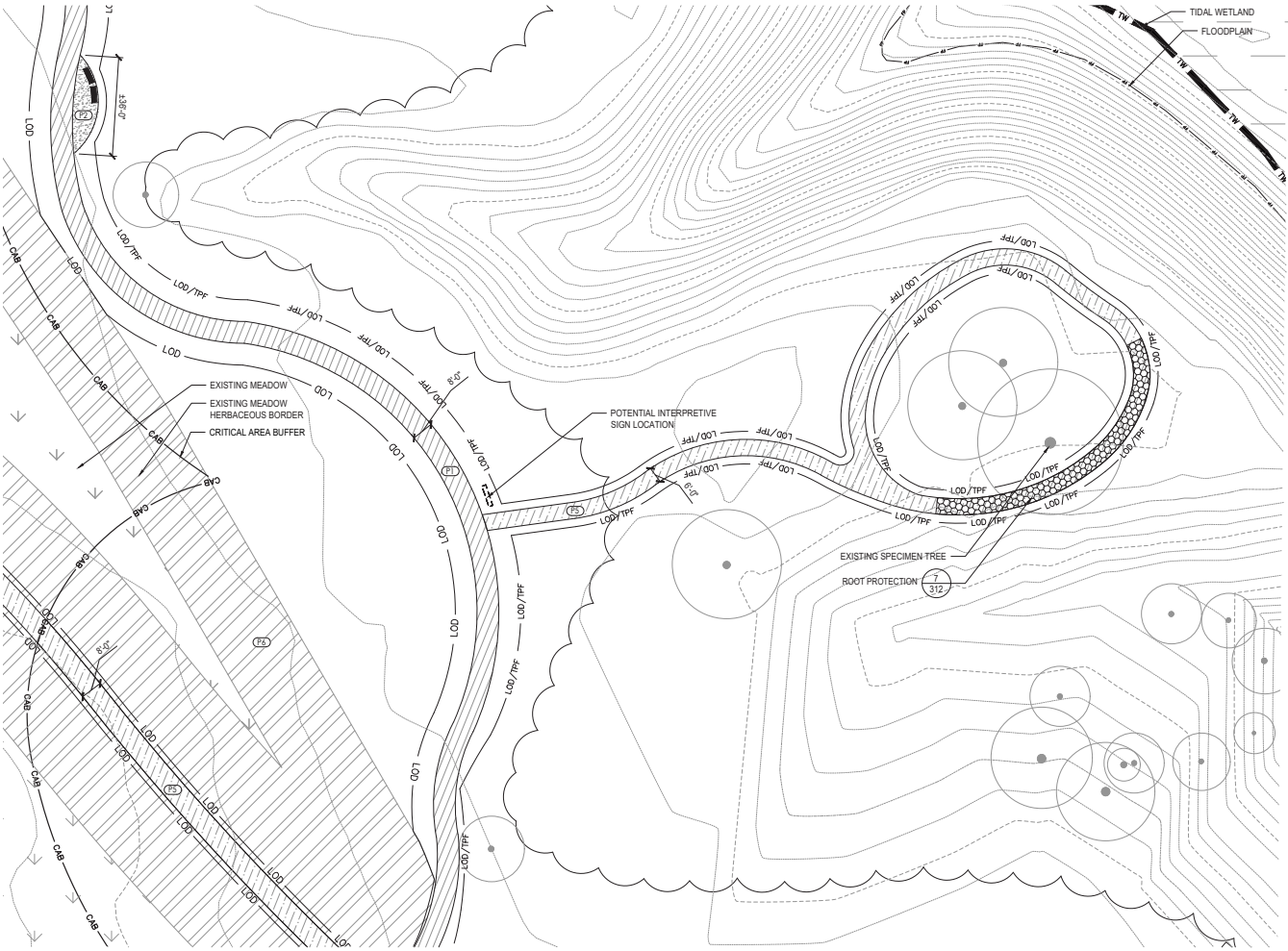
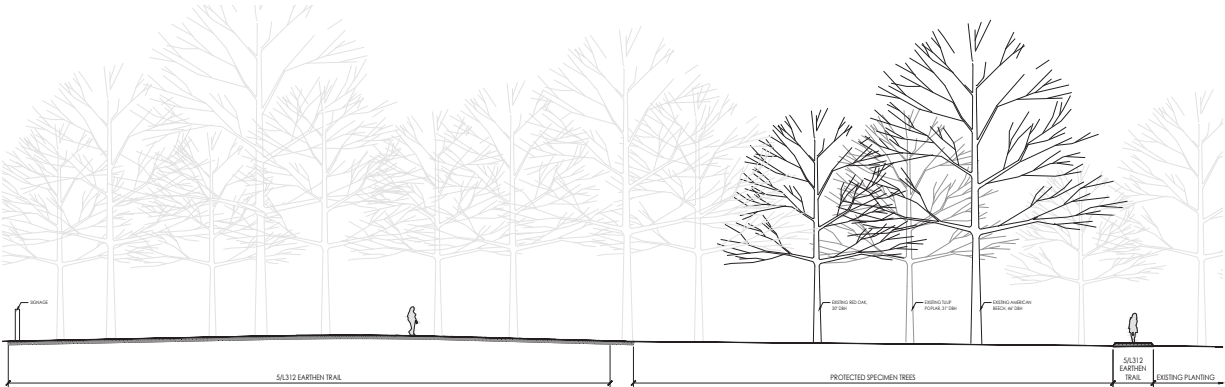


Steep slopes
Photo by Environmental Systems Analysis



Frederick Douglass Park on the Tuckahoe

Queen Anne, MD

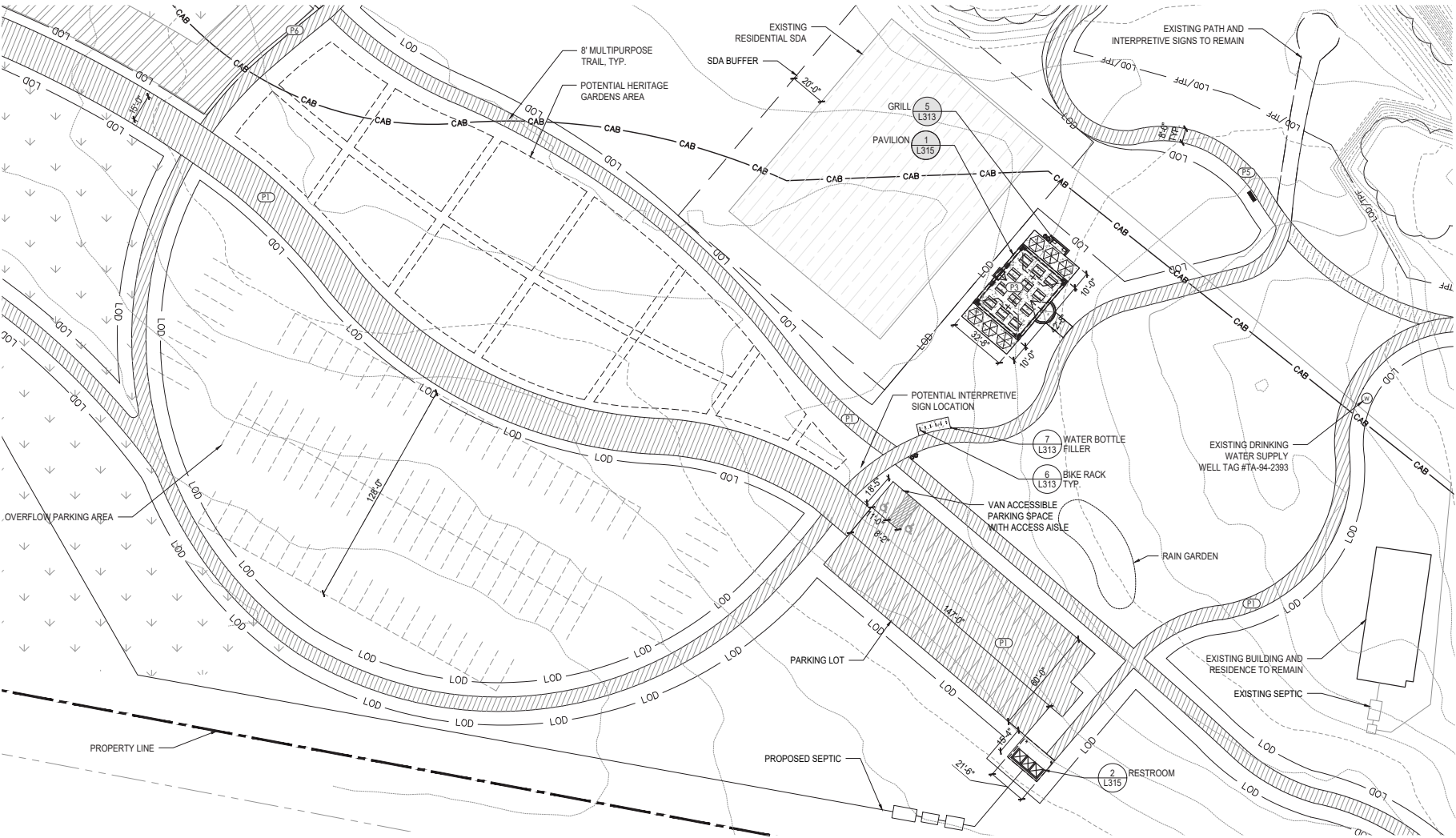
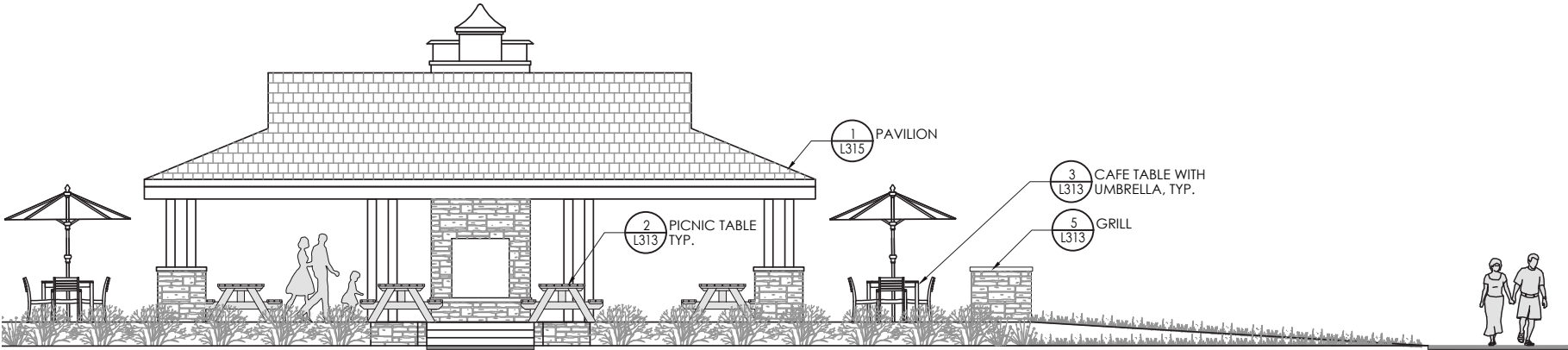


Beech
Photo by Environmental Systems Analysis

Frederick Douglass Park on the Tuckahoe

Queen Anne, MD

PAVILION: SITE PLAN SUBMISSION



PAVING LEGEND

| | |
|--------------------------|---------------------------|
| 3/4" ASPHALT L317 PAVING | 5 DECOMPOSED L312 GRANITE |
| 1 CONCRETE L312 PAVING | 4/4" DECKING L317 |
| 6 EARTHEN TRAIL L312 | |

FURNISHING LEGEND



Gorden Castle Gardens

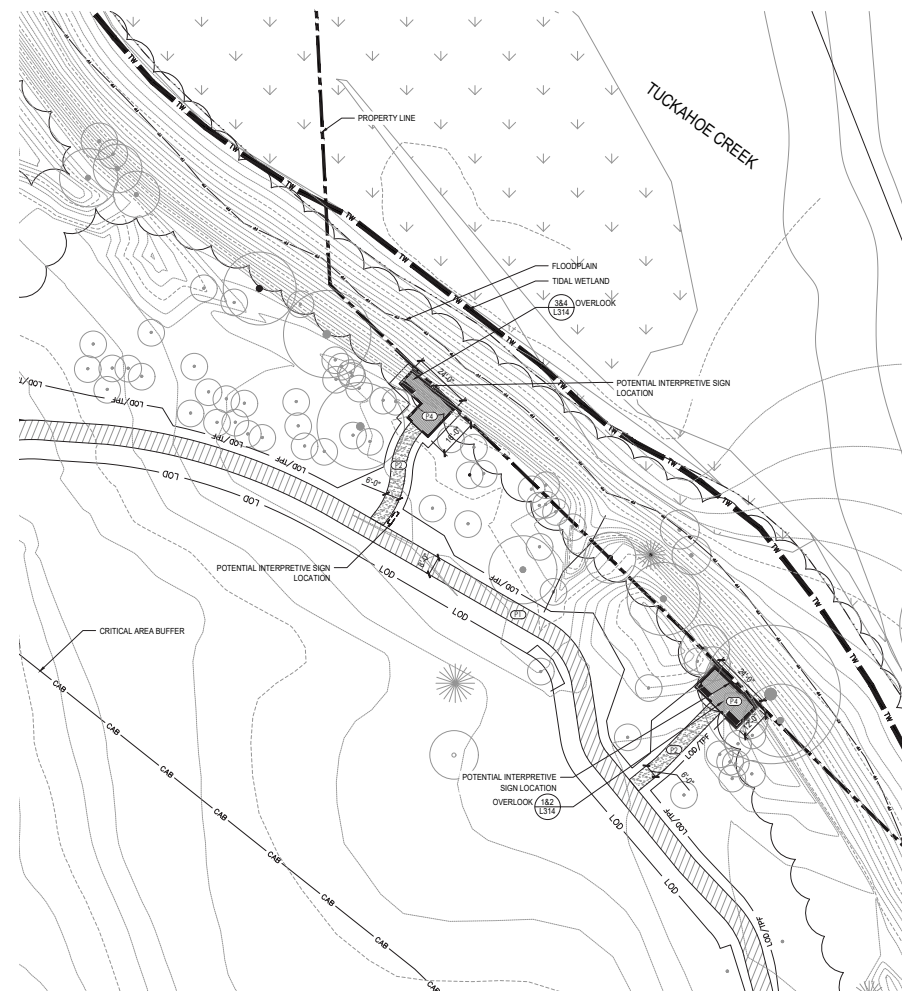
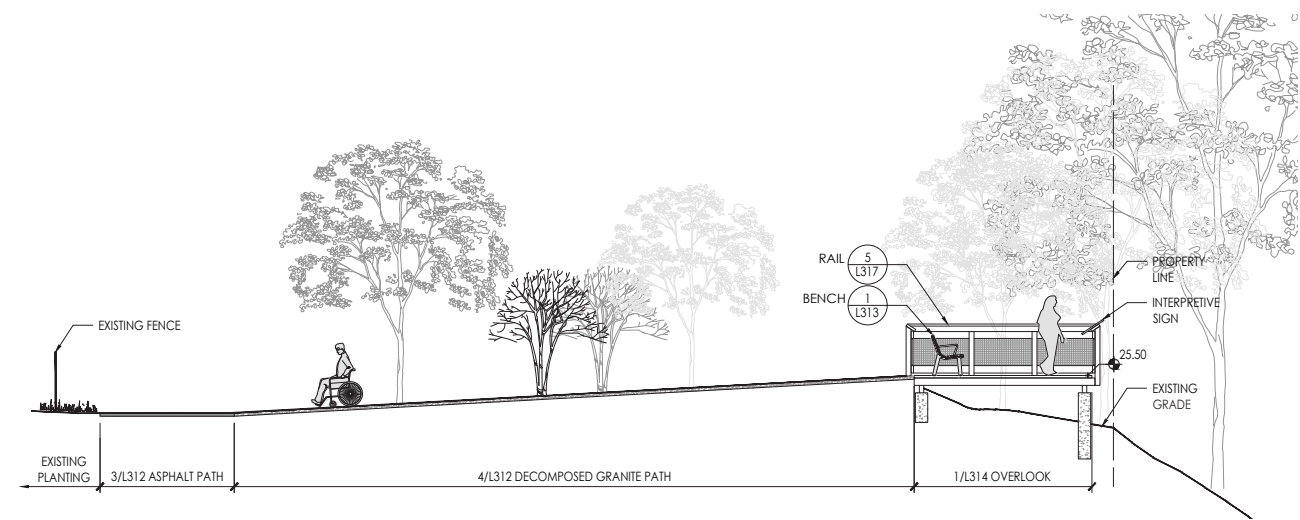


New York Botanical Garden - African American Garden

Frederick Douglass Park on the Tuckahoe

Queen Anne, MD

OVERLOOKS: SITE PLAN SUBMISSION



Frederick Douglass Park on the Tuckahoe

Queen Anne, MD



Seeds of Change

The area surrounding you is a pollinator meadow. These meadows are filled with a diverse array of native plants, including flowers and grasses. This area will provide critical habitats for bee and butterfly populations. Old field and grassland habitat loss, farming, and pesticide use have led to a decline in pollinators across the state. Talbot County will work to continue the meadow’s development in the coming years.

“The ground was prepared—seed sown—and the plant cultivated by our own colored hands; and although the soil is American, it took no offense on account of our color—but yielded a generous return for our industry. From this we infer that the earth has no prejudice against color, and that nature is no respecter of persons.”

– Frederick Douglass in *The North Star*, October 1848

Did you know?

Abolitionists, including Frederick Douglass, also made an environmental case against slavery. They argued that slavery led to soil exhaustion and negatively affected the natural world. Douglass promoted self-reliant agriculture as an alternative.

Pollinator Meadow Plants

- Lanceleaf Coreopsis
Coreopsis lanceolata
- Black eyed Susan
Rudbeckia hirta
- Virginia Wildrye
Elymus virginicus
- Purple Coneflower
Echinacea purpurea
- Partridge Pea
Chamaecrista fasciculata

Dig Deeper:

Use this QR code to learn more about the pollinator meadow and the plants and animals that call it home. You can also learn more about Frederick Douglass and his experiences in Talbot County.

<https://frederickdouglasspark.org/>



Pollinators help carry pollen from one flower to another. This process allows plants to become fertilized and produce seeds and young plants. Pollinators are important for agriculture and clean air. Bees, butterflies, bats, and birds can be pollinators.

Virginia Wildrye photo by Aaron Volkenen is licensed under CC by 4.0

FRDO- Pollinator Meadow Graphic with 1.5” border | Size: 76”W x 22.5”H



Frederick Douglass Park on the Tuckahoe

Queen Anne, MD



Frederick Douglass Park on the Tuckahoe

Queen Anne, MD



Frederick Douglass Park on the Tuckahoe

Queen Anne, MD