



INTERNATIONAL  
ECONOMIC  
DEVELOPMENT  
COUNCIL

# The Future of Economic Development in an AI World

*Implications, opportunities, and adaptation strategies for the field*


**Dell Gines, PhD, CEcD**



Email:  
dgines@iedc.org



LinkedIn:  
Dell Gines




**Accelerate AI Adoption**

Support economic development orgs in integrating AI tools into their operations



**Strengthen Development Practice**

Equip practitioners with guidance for AI-impacted areas



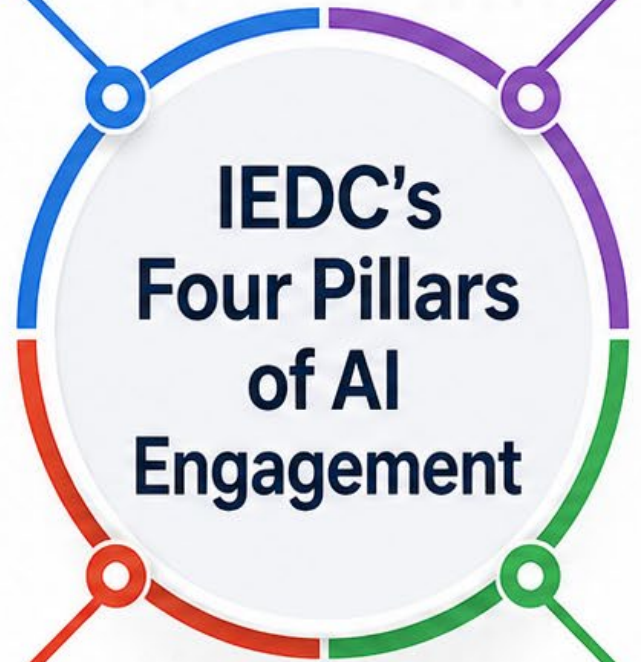
**Plan for Long-Term AI Disruption**

Help developers anticipate and prepare for AI's transformative impacts



**Accelerate Innovation in AI**

Support development and deployment of AI-tools for economic development practice



# AI Adoption and Disruption



**Organization  
Adoption and  
Disruption**

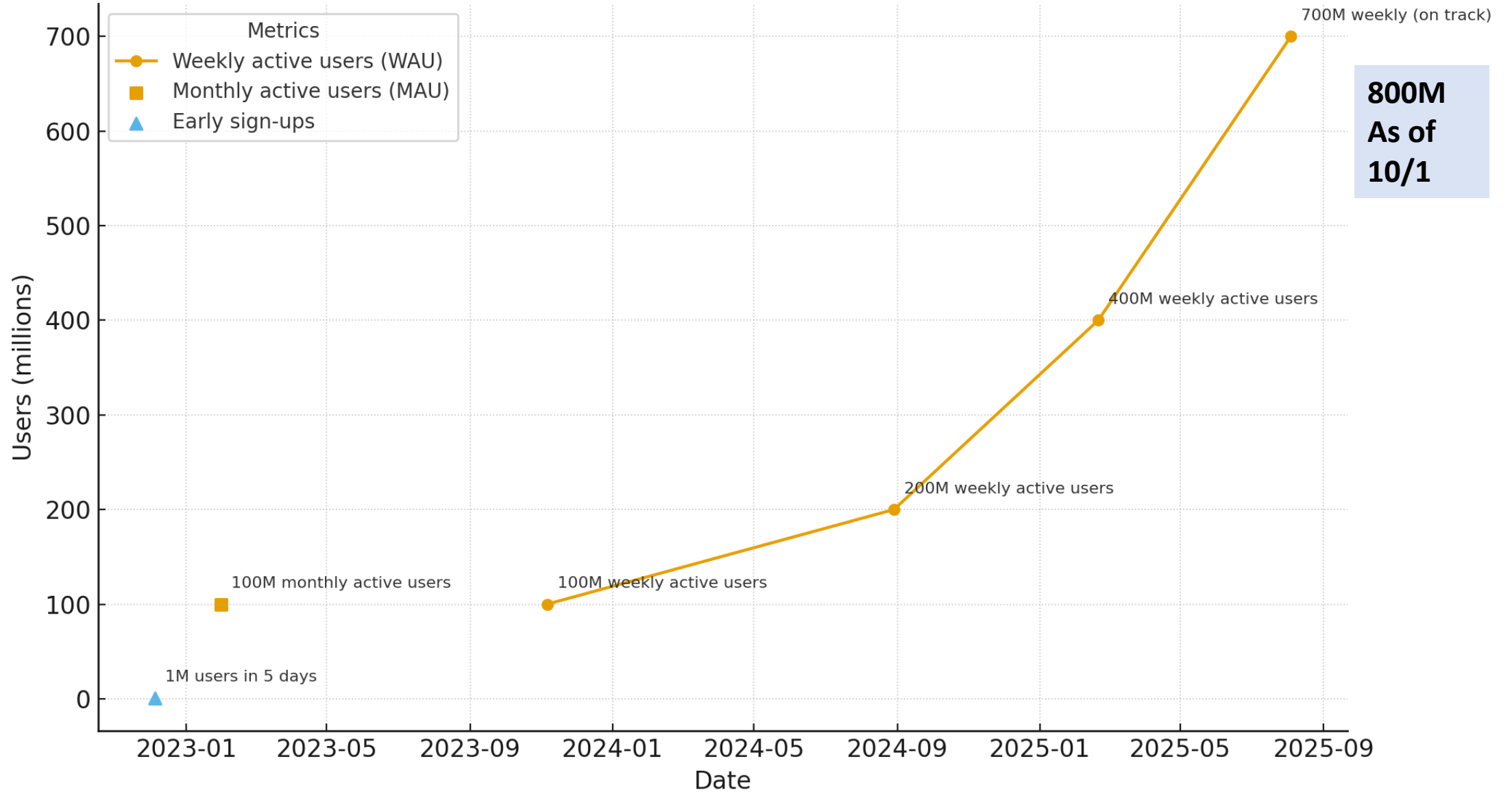


**Shared  
Impacts**



**Economic  
Adoption and  
Disruption**

# ChatGPT user base growth (millions)



# Thoughts from Professionals on AI

High expectations for AI, but a slower pace of organizational change



## Forces with high/transformational impact

The rise of AI and GenAI



80% of professionals see AI as having a high or transformational impact

## Disconnect between future aspiration and current pace



80% believe AI will have a high or transformational impact on their profession within 5 years



38% Only 38% expect to see transformational or high levels of change in their organization this year



53% believe their organization is already experiencing at least one type of benefit from AI adoption

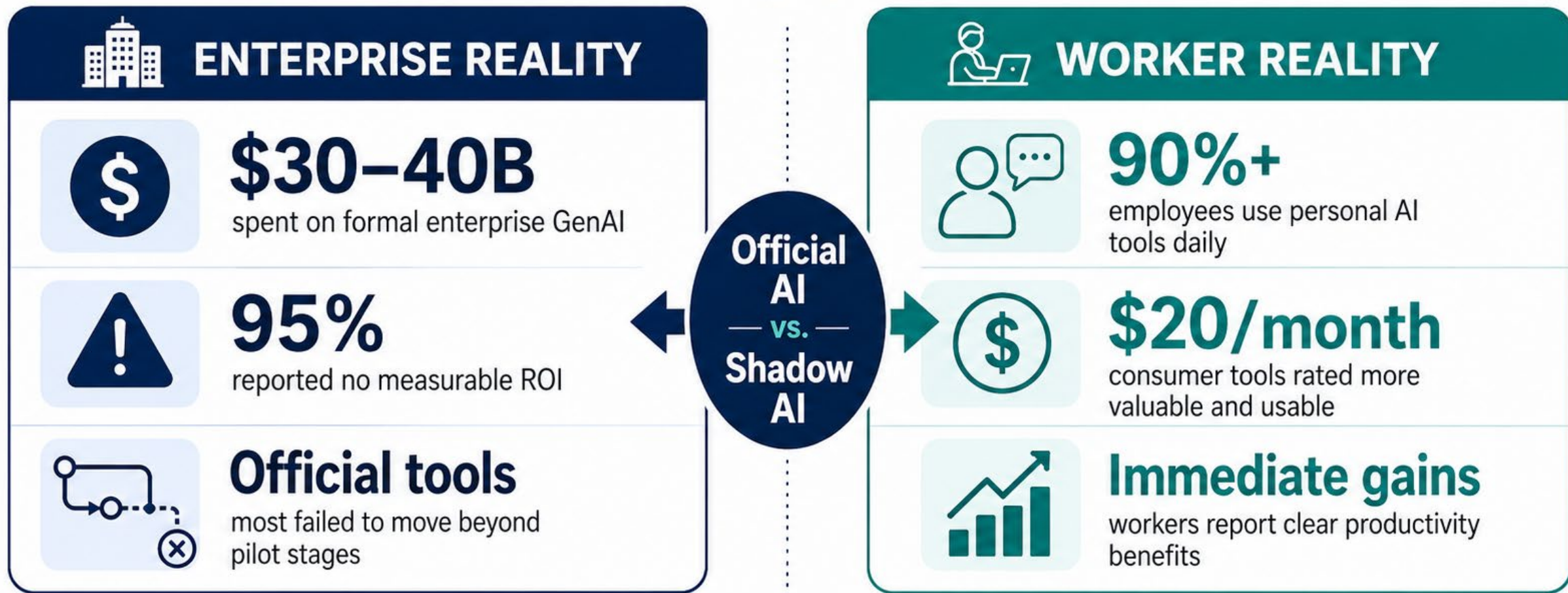


30% believe their organization is moving too slowly in AI adoption



# MIT NANDA 2025: The GenAI Divide

Why enterprise GenAI spending is struggling while personal AI use is delivering value



**Key takeaway: Shadow AI is the real driver of short-term ROI and user satisfaction.**



# PA State Government – ChatGPT Pilot Summary



Generative AI pilot across Pennsylvania state agencies



**175** employees



**14** agencies



**95** minutes saved per worker per day



## Goal

Test generative AI to reduce routine administrative work and boost productivity.

## Use Cases



Email drafting



Report summaries



Policy research



Code help



Hiring support



Contract support

## Results



Avg. **95**

minutes saved per worker per day



**85%+**

reported faster task completion



**85%+**

reported a positive experience

## Key Takeaways



Human review still required



Training was essential



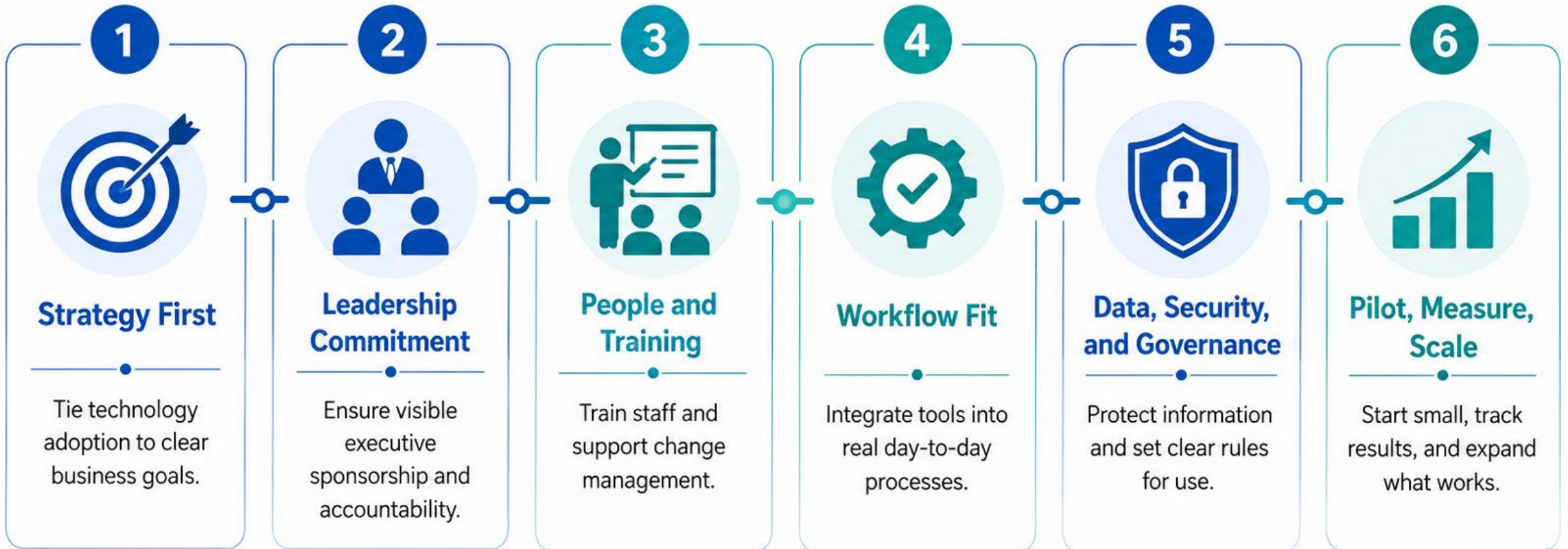
AI enhanced jobs – did not replace them



Early evidence suggests generative AI can improve public-sector productivity when paired with training and human oversight.



# Principles of Tech Adoption in Firms



ALIGN STRATEGY

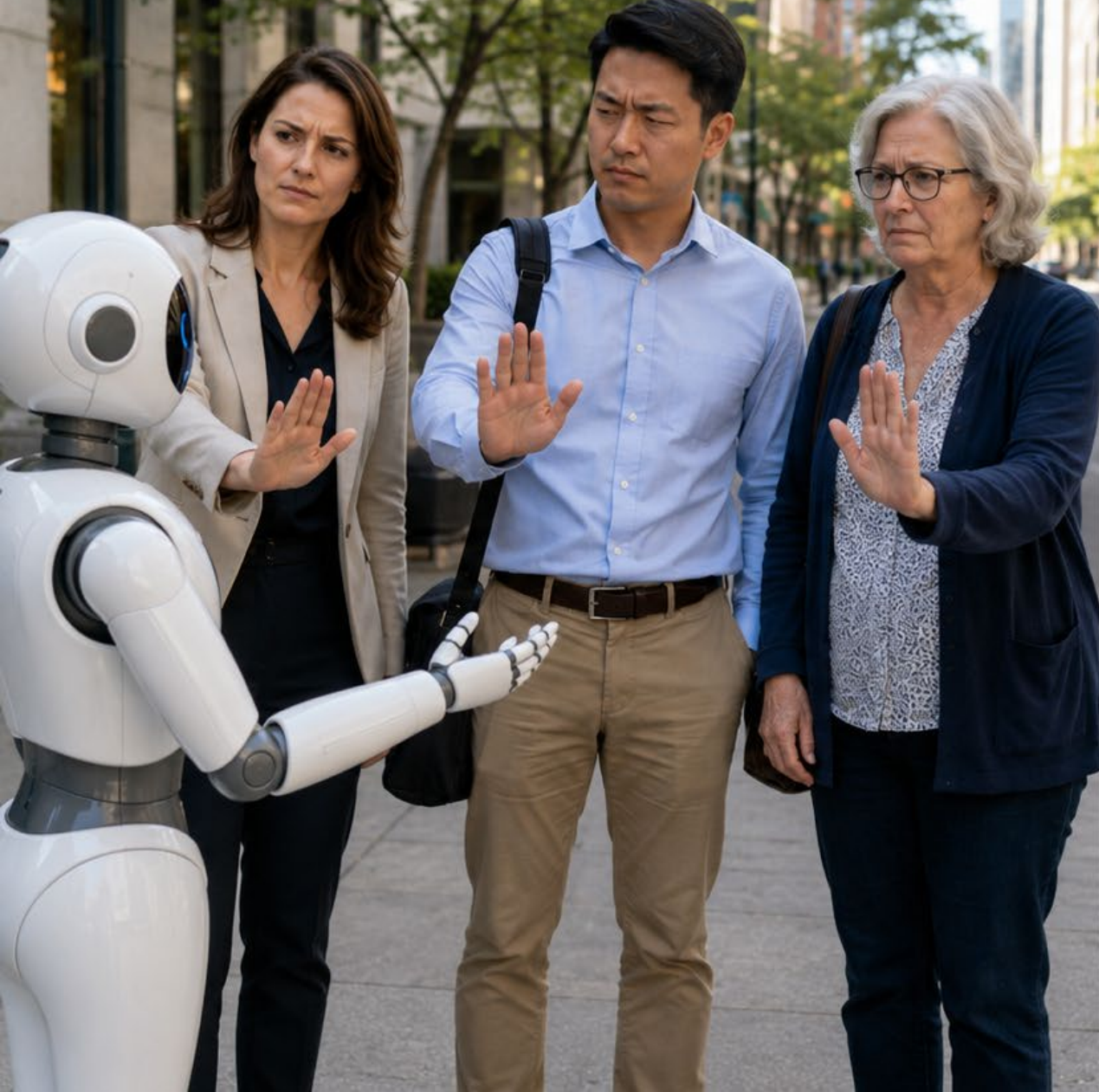
• EMPOWER PEOPLE

• USE TECHNOLOGY

• DRIVE RESULTS




# The Difference Between Successful Adoption and Poor Adoption is Getting Your People on Board in a Defined Process!



AI has tremendous power to create efficiency and time savings. This in the short run makes employees and owners happy!

# Before AI



 Time Consuming

 Manual Work

 High Stress

 Lower Productivity

# With AI



 Saves Time

 AI Handles the Heavy Lifting

 Less Stress, More Focus

 Higher Productivity



# AI Makes Starting and Running a Business Faster and Cheaper.



But that also means it eliminates the need for other consultants, contractors and businesses in the supply chain.



Former  
Marketer

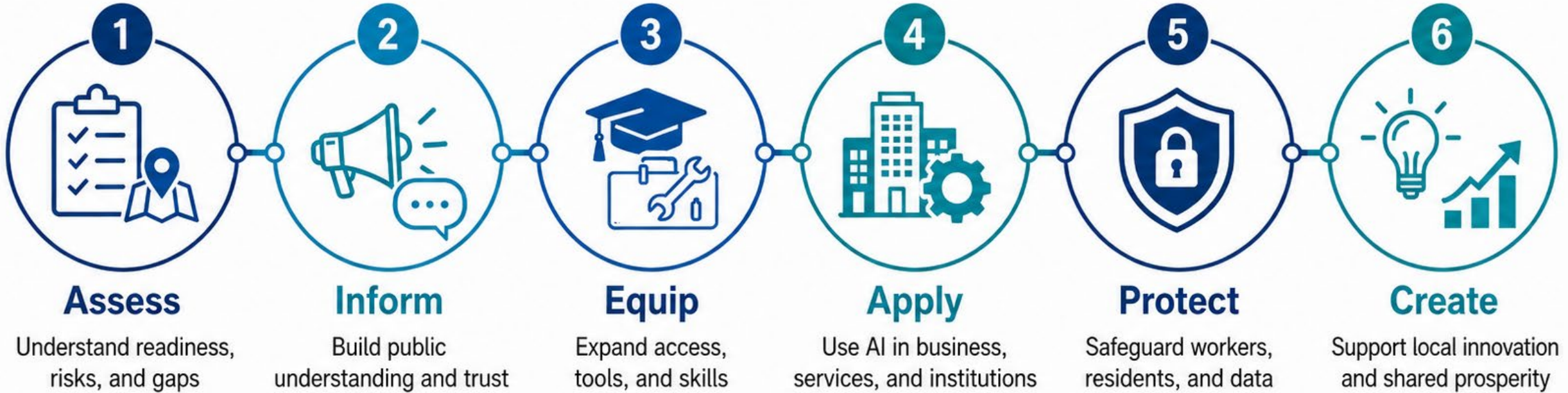
Former  
Planner

Former  
Bookkeeper

What happens when both the labor market and the small business market is disrupted at once?



# Community-First AI Adoption Model



*Adoption + Protection = Shared Community Benefit*



## Community First Ethos

Use AI to strengthen people, places, and opportunity — without leaving residents behind.

# The Golden Age of AI



We are in what I call the “golden age” of AI where professional experience combined with technology can do wonderful things. We need to leverage this moment to make sure that artificial intelligence supports our communities.

# Talbot County



The values of Talbot County should determine how AI technology is deployed and how its businesses and employees are supported. Talbot County values should serve as the filter for all AI adoption. The central question is, “Does this make Talbot County a better place to live, work and play?”

# Connect with Dr. Dell Gines

---



**LinkedIn: Dell Gines**